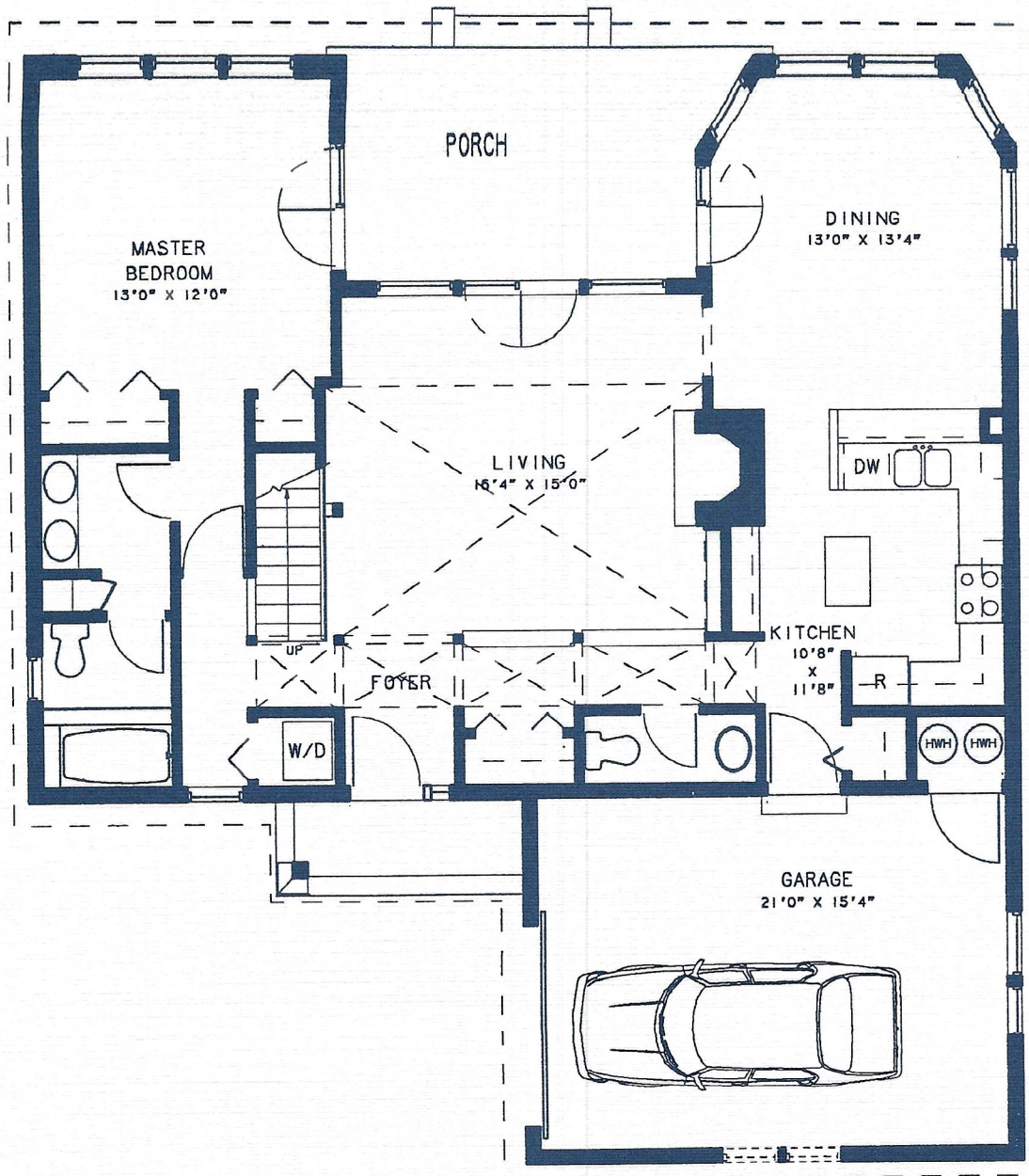


# Pemaquid

## First Floor



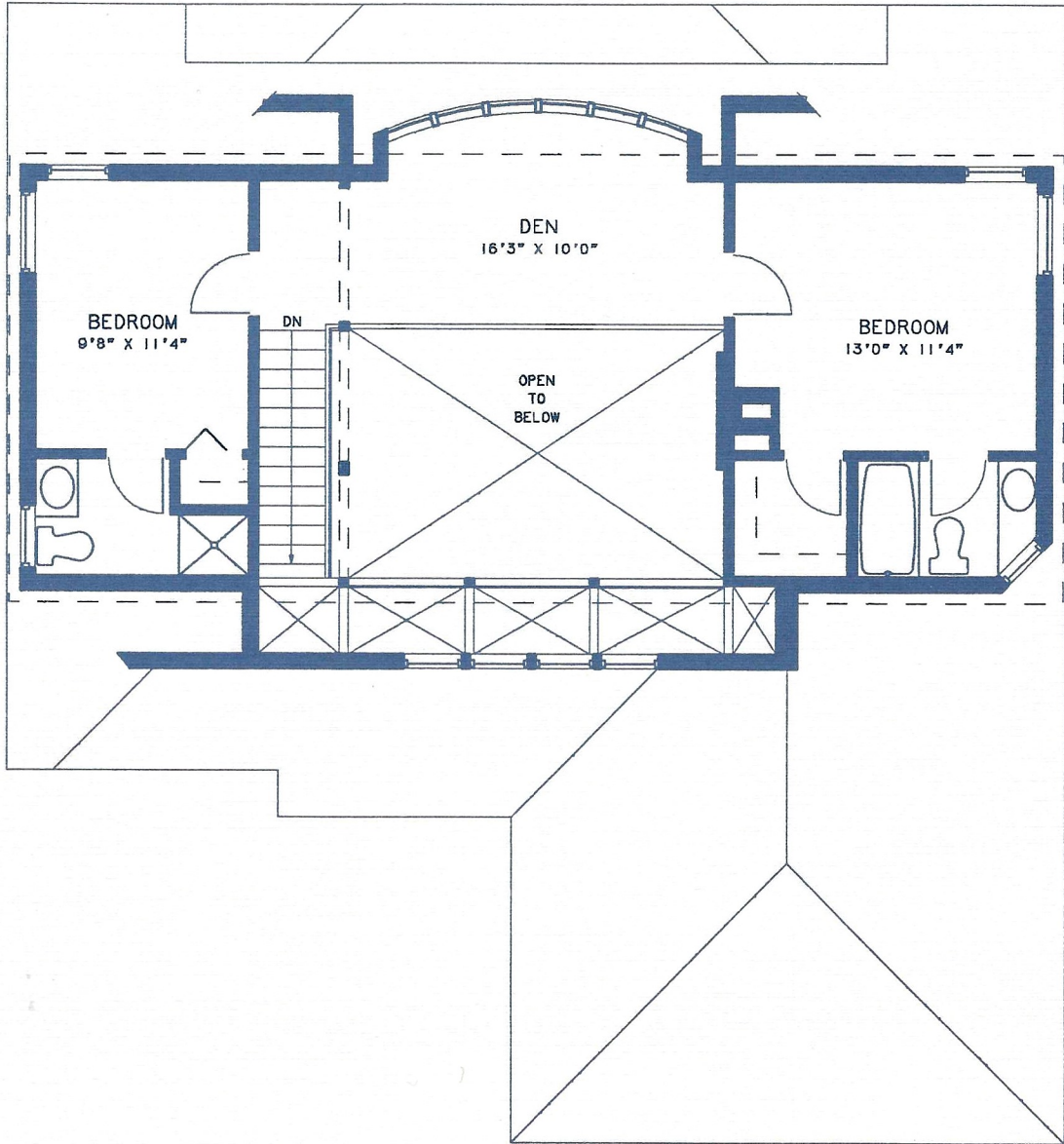
All dimensions are approximate and may vary slightly after construction.

### **Pemaquid Unit—1842 sf** **Three bedroom / den, 3½ baths.**

- The height of luxury, living on the ocean. An ideal space for elegant entertainment. Plenty of privacy within an architectural gem. Located always on the "promontory" sites.
- Same individual living and dining as in Monhegan with the following additional features:
  1. Living room is a dramatic two-story open
- Same master suite as Monhegan.
- Same foyer and kitchen as Monhegan.
- Upstairs den overlooks livingroom. Dramatic curved bow window which faces prominent view. A spectacular window-view. (The spot for a telescope to watch windjammers).
- Two upstairs bedrooms, each with bathroom; one

# Pemaquid

## Second Floor



*All dimensions are approximate and may vary slightly after construction.*

SAMOSSET  
VILLAGE

*The developer reserves the right to change and/or alter materials, specifications, features, dimensions, designs, landscaping and prices without notice.*